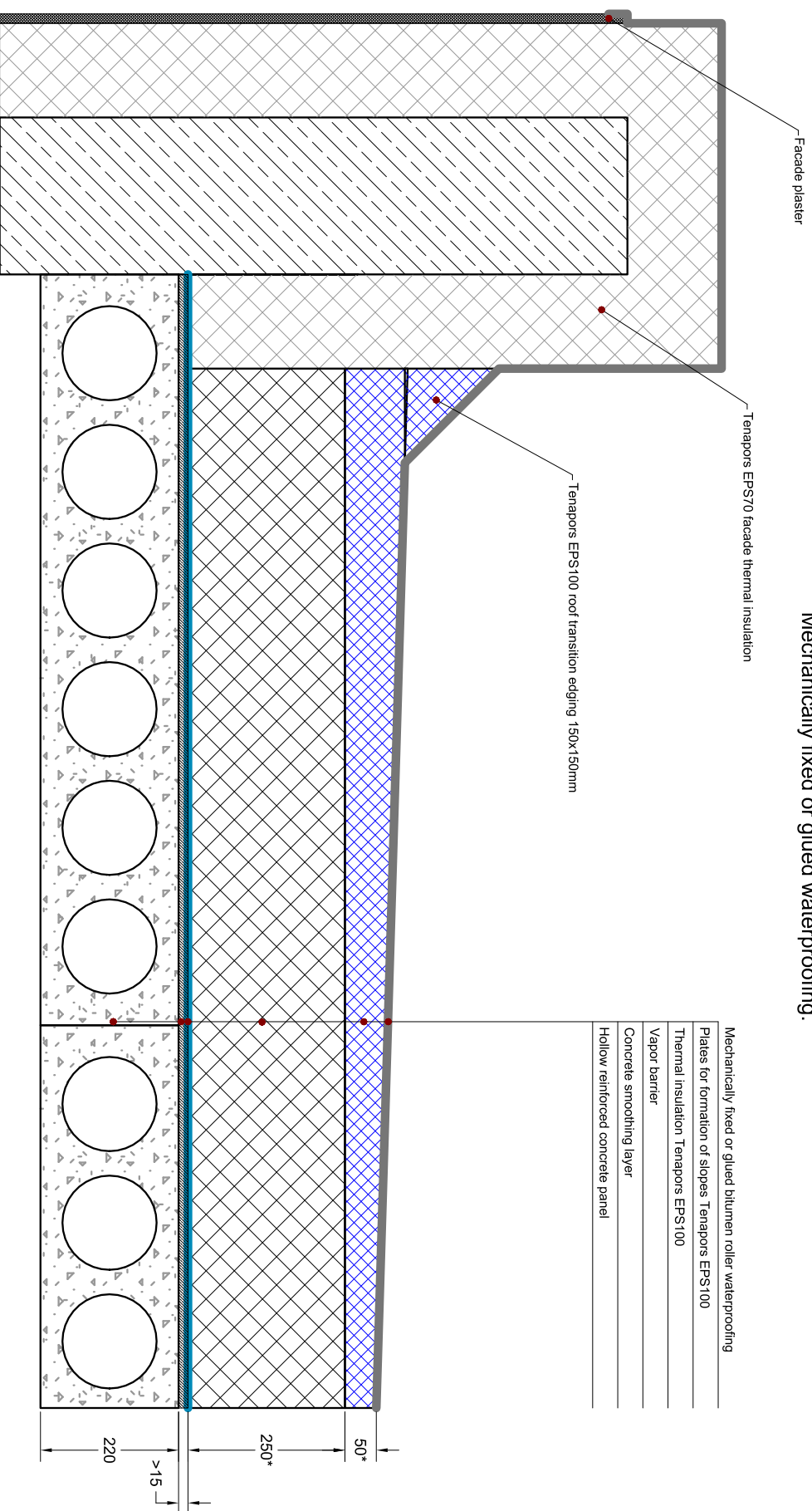


Formation of inclination on flat roof based on hollow reinforced concrete panels. Mechanically fixed or glued waterproofing.



- Mechanically fixed or glued bitumen roller waterproofing
- Plates for formation of slopes Tenapors EPS100
- Thermal insulation Tenapors EPS100
- Vapor barrier
- Concrete smoothing layer
- Hollow reinforced concrete panel

Table No. 1. Tenapors used materials

Nr.	Tenapors material	Picture
1.	Tenapors EPS 70/100	
2.	Plates for formation of slopes TENAPORS EPS100	

NOTES:

- * Characteristics such as thickness of the thermal insulation layer and bearing structure, and otherare technical informaion is informative only - the actual values may vary depending on technical solution that has been chosen.
- ** Before choosing a solution, consult with a certified specialist regarding it's compliance with fire safety requirements and other legislation.

SIA "TENAPORS"

Spodribas street 1, Dobeļe, LV-3701, Latvia
Tel.: +37163707051 Faks: +37163724371

Name
Formation of inclination on flat roof based on hollow reinforced concrete panels. Mechanically fixed or glued waterproofing.

Drawing number
LJ-2018-9-1-ENG

Type of Product
Roof

Scale
1:10

Date
September 2018

Formation of inclination on flat roof based on monolithic reinforced concrete panels. Mechanically fixed or glued waterproofing.

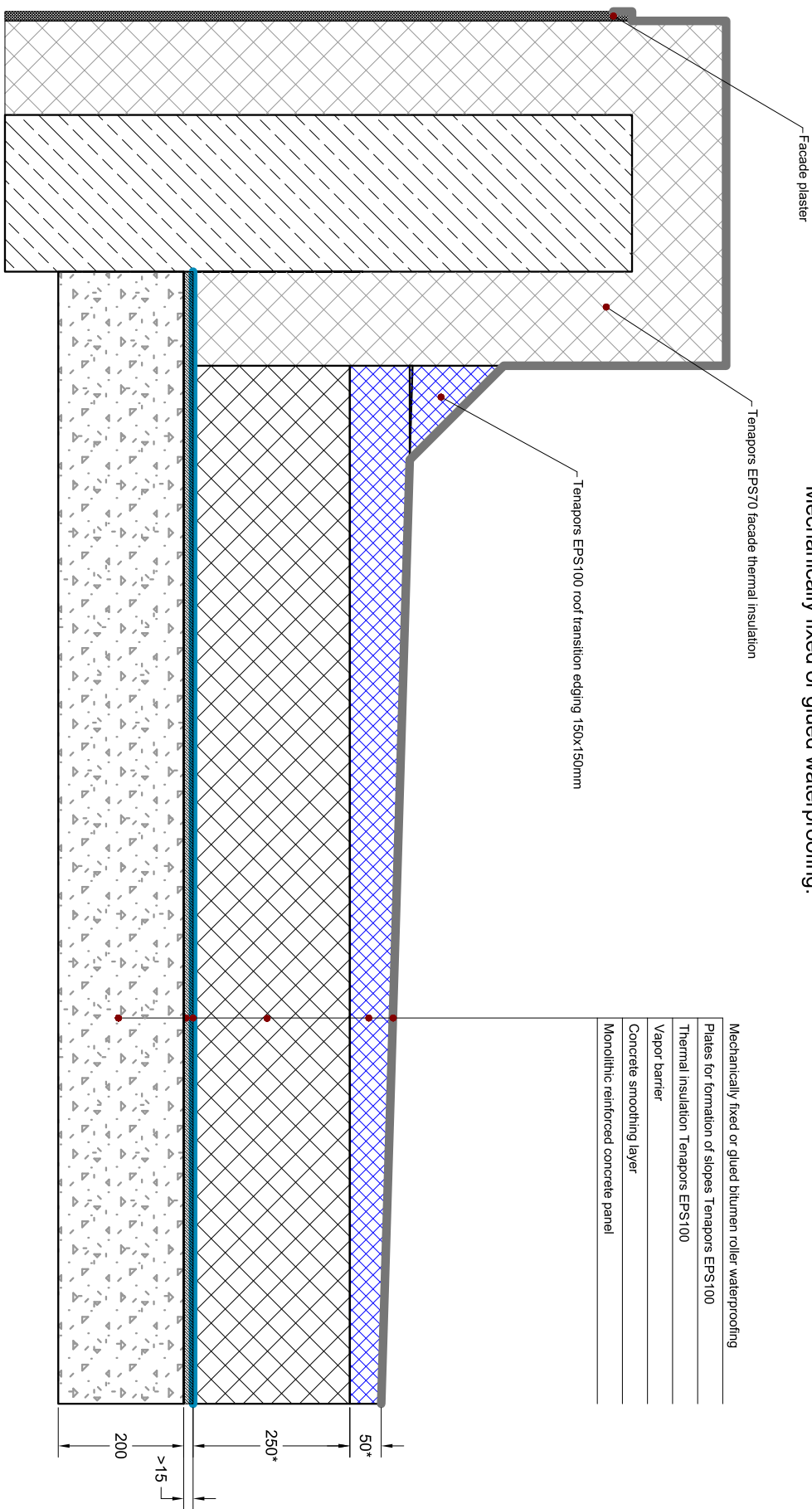


Table No. 1. Tenapors used materials

Nr.	Tenapors material	Picture
1.	Tenapors EPS 70/100	
2.	Plates for formation of slopes TENAPORS EPS100	

NOTES:

- * Characteristics such as thickness of the thermal insulation layer and bearing structure, and otherare technical informaion is informative only - the actual values may vary depending on technical solution that has been chosen.
- ** Before choosing a solution, consult with a certified specialist regarding it's compliance with fire safety requirements and other legislation.



SIA "TENAPORS"

Spodribas street 1, Dobele, LV-3701, Latvia
Tel.: +37163707051 Faks: +37163724371

Drawing number

LJ-2018-9-2-ENG

Name
Formation of inclination on flat roof
based on monolithic reinforced
concrete panels. Mechanically fixed or
glued waterproofing.

Type of Product

Roof

Scale

1:10

Date

September
2018

Formation of inclination on flat roof backed on steel roof bearing structure. Mechanically fixed or glued waterproofing.

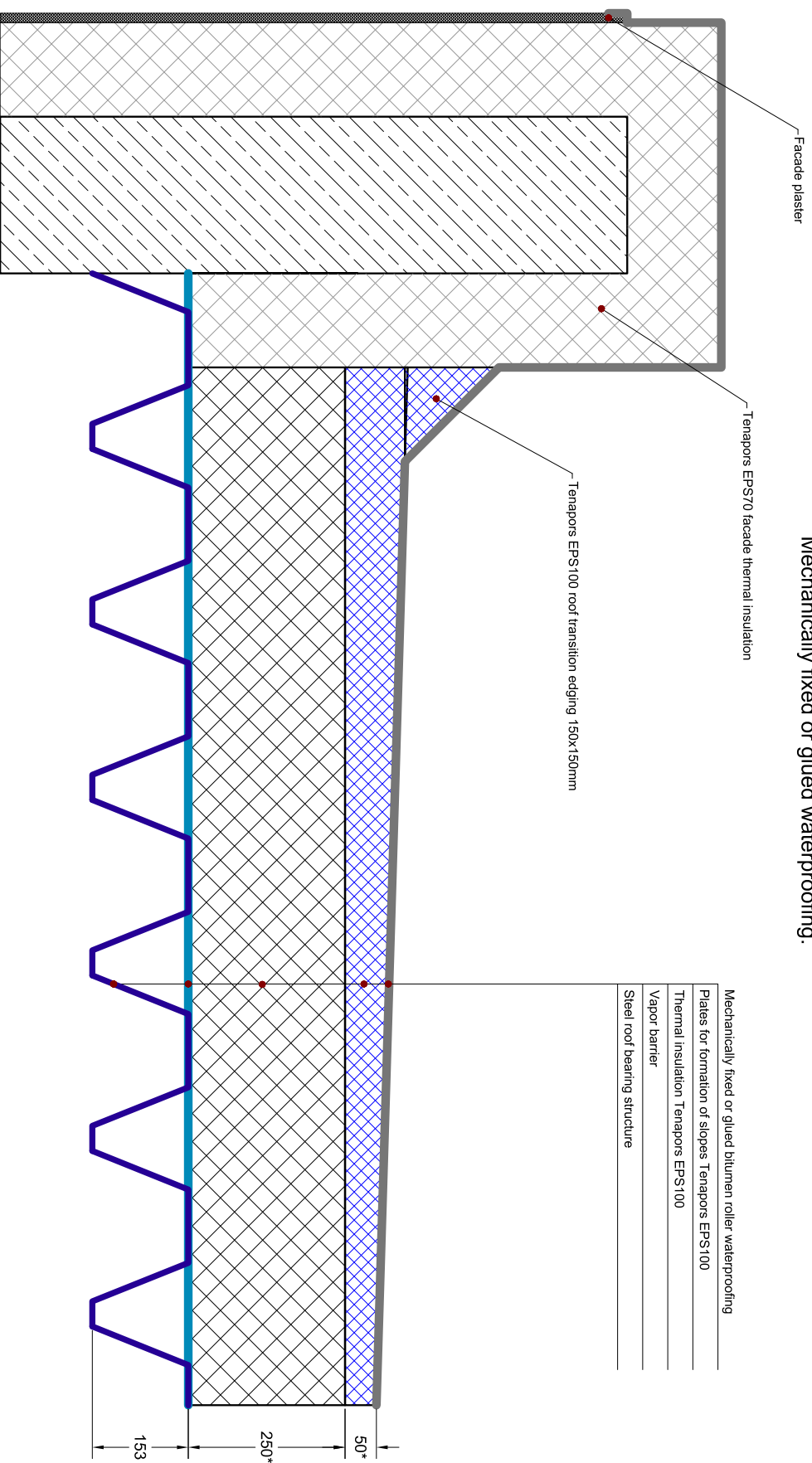


Table No. 1. Tenapors used materials

Nr.	Tenapors material	Picture
1.	Tenapors EPS 70/100	
2.	Plates for formation of slopes TENAPORS EPS100	

NOTES:

* Characteristics such as thickness of the thermal insulation layer and bearing structure, and otherare technical informaion is informative only - the actual values may vary depending on technical solution that has been chosen.

** Before choosing a solution, consult with a certified specialist regarding it's compliance with fire safety requirements and other legislation.



SIA "TENAPORS" Spodribas street 1, Dobeļe, LV-3701, Latvia Tel.: +37163707051 Faks: +37163724371		Name Formation of inclination on flat roof backed on steel roof bearing structure. Mechanically fixed or glued waterproofing.	
Drawing number	LJ-2018-9-3-ENG	Type of Product	Roof
		Scale	1:10
		Date	September 2018

Formation of inclination on flat roof based on hollow reinforced concrete panels. Hot melted waterproofing.

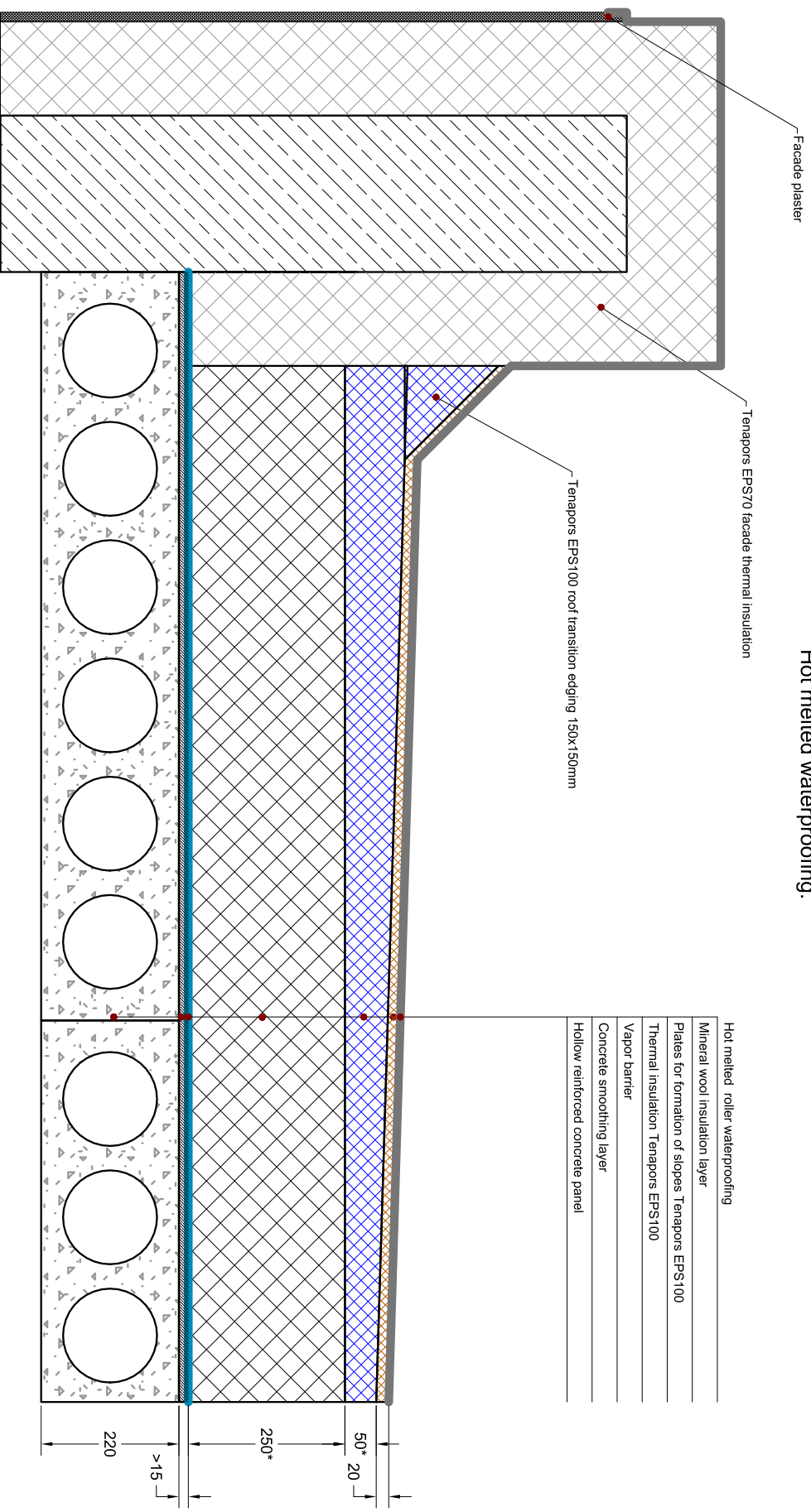


Table No. 1. Tenapors used materials

Nr.	Tenapors material	Picture
1.	Tenapors EPS 70/100	
2.	Plates for formation of slopes TENAPORS EPS100	

NOTES:

* Characteristics such as thickness of the thermal insulation layer and bearing structure, and otherare technical informaion is informative only - the actual values may vary depending on technical solution that has been chosen.

** Before choosing a solution, consult with a certified specialist regarding it's compliance with fire safety requirements and other legislation.



SIA "TENAPORS"

Spodribas street 1, Dobeļe, LV-3701, Latvia
Tel.: +37163707051 Faks: +37163724371

Drawing number

LJ-2018-9-4-ENG

Name

Formation of inclination on flat roof based on hollow reinforced concrete panels. Hot melted waterproofing.

Type of Product

Roof

Scale

1:10

Date

September 2018

Formation of inclination on flat roof based on monolithic reinforced concrete panels. Hot melted waterproofing.

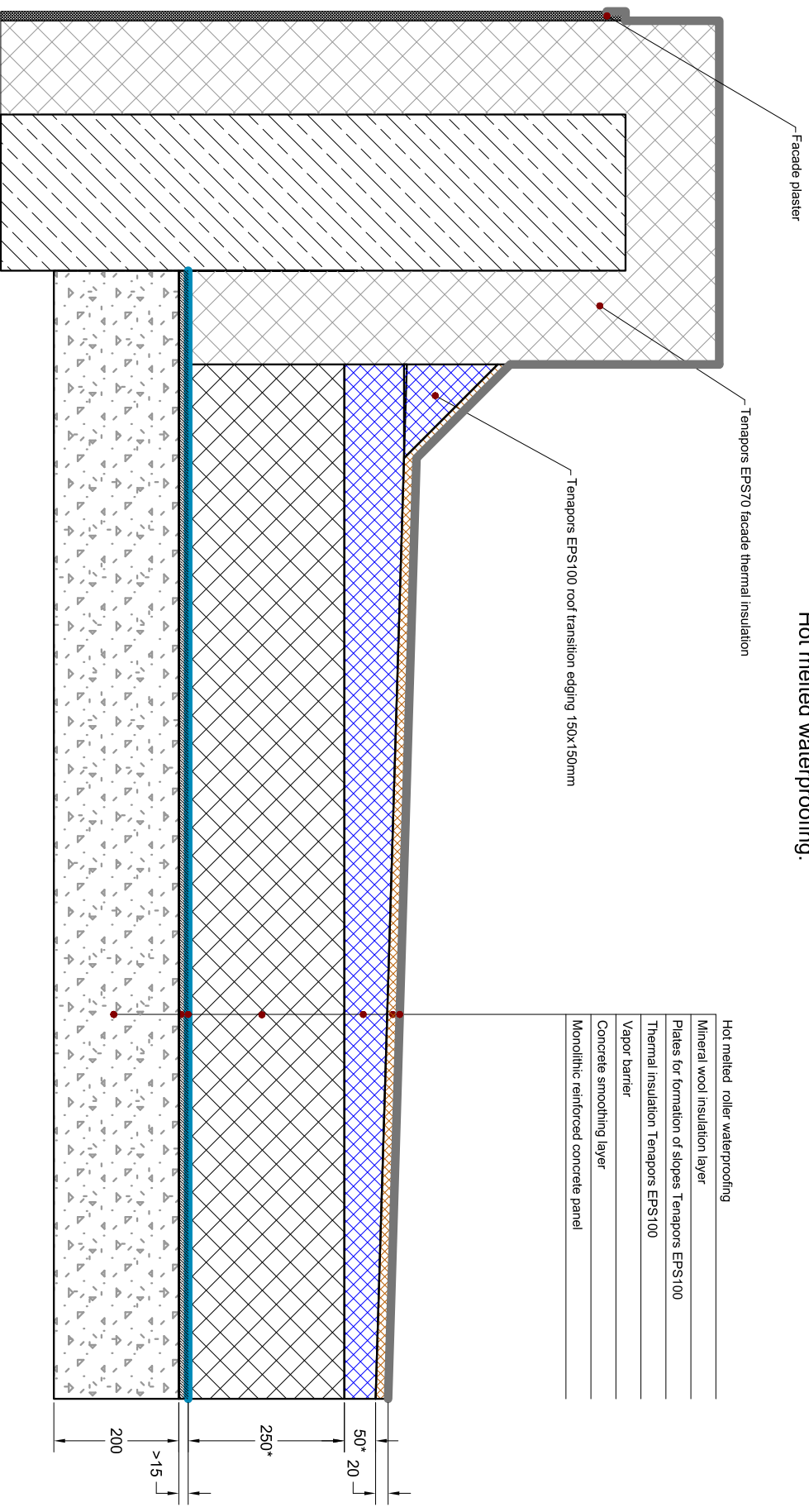


Table No. 1. Tenapors used materials

Nr.	Tenapors material	Picture
1.	Tenapors EPS 70/100	
2.	Plates for formation of slopes TENAPORS EPS100	

NOTES:

* Characteristics such as thickness of the thermal insulation layer and bearing structure, and otherare technical informaion is informative only - the actual values may vary depending on technical solution that has been chosen.

** Before choosing a solution, consult with a certified specialist regarding it's compliance with fire safety requirements and other legislation.



SIA "TENAPORS"

Spodribas street 1, Dobeles, LV-3701, Latvia
Tel.: +37163707051 Faks: +37163724371

Drawing number

LJ-2018-9-5-ENG

Name
Formation of inclination on flat roof
based on monolithic reinforced
concrete panels. Hot melted
waterproofing.

Type of Product

Roof

Scale

1:10

Date

September
2018

Formation of inclination on flat roof based on steel roof bearing structure. Hot melted waterproofing.

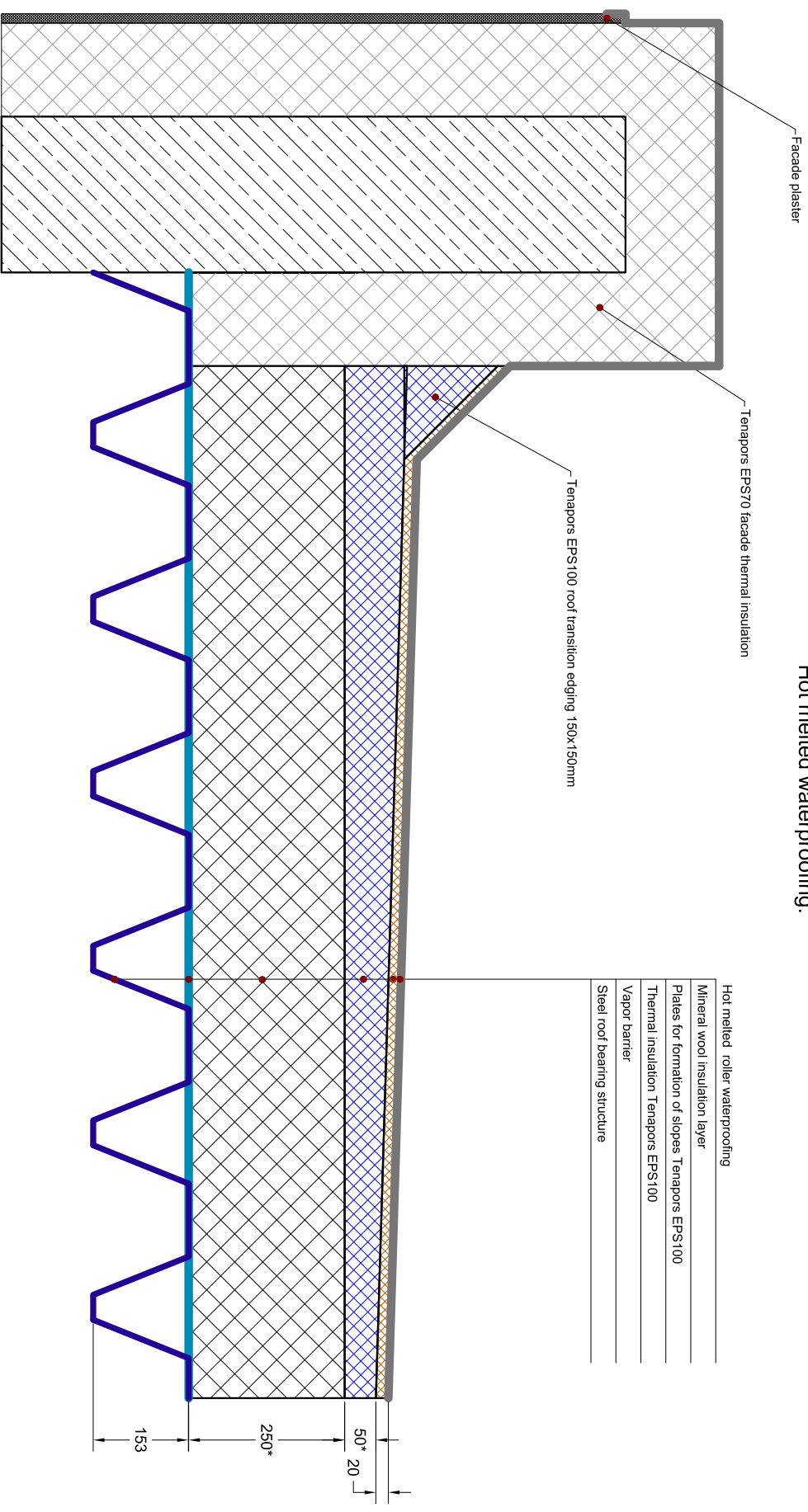


Table No. 1. Tenapors used materials

Nr.	Tenapors material	Picture
1.	Tenapors EPS 70/100	
2.	Plates for formation of slopes TENAPORS EPS100	

NOTES:

* Characteristics such as thickness of the thermal insulation layer and bearing structure, and otherare technical informaion is informative only - the actual values may vary depending on technical solution that has been chosen.

** Before choosing a solution, consult with a certified specialist regarding it's compliance with fire safety requirements and other legislation.



SIA "TENAPORS"

Spodnibas street 1, Dobeles, LV-3701, Latvia

Tel.: +37163707051 Faks: +37163724371

Drawing number

LJ-2018-9-6-ENG

Name

Formation of inclination on flat roof based on steel roof bearing structure.
Hot melted waterproofing.

Type of Product

Roof

Scale

1:10

Date

September
2018

Flat roof drainage funnel assembly.

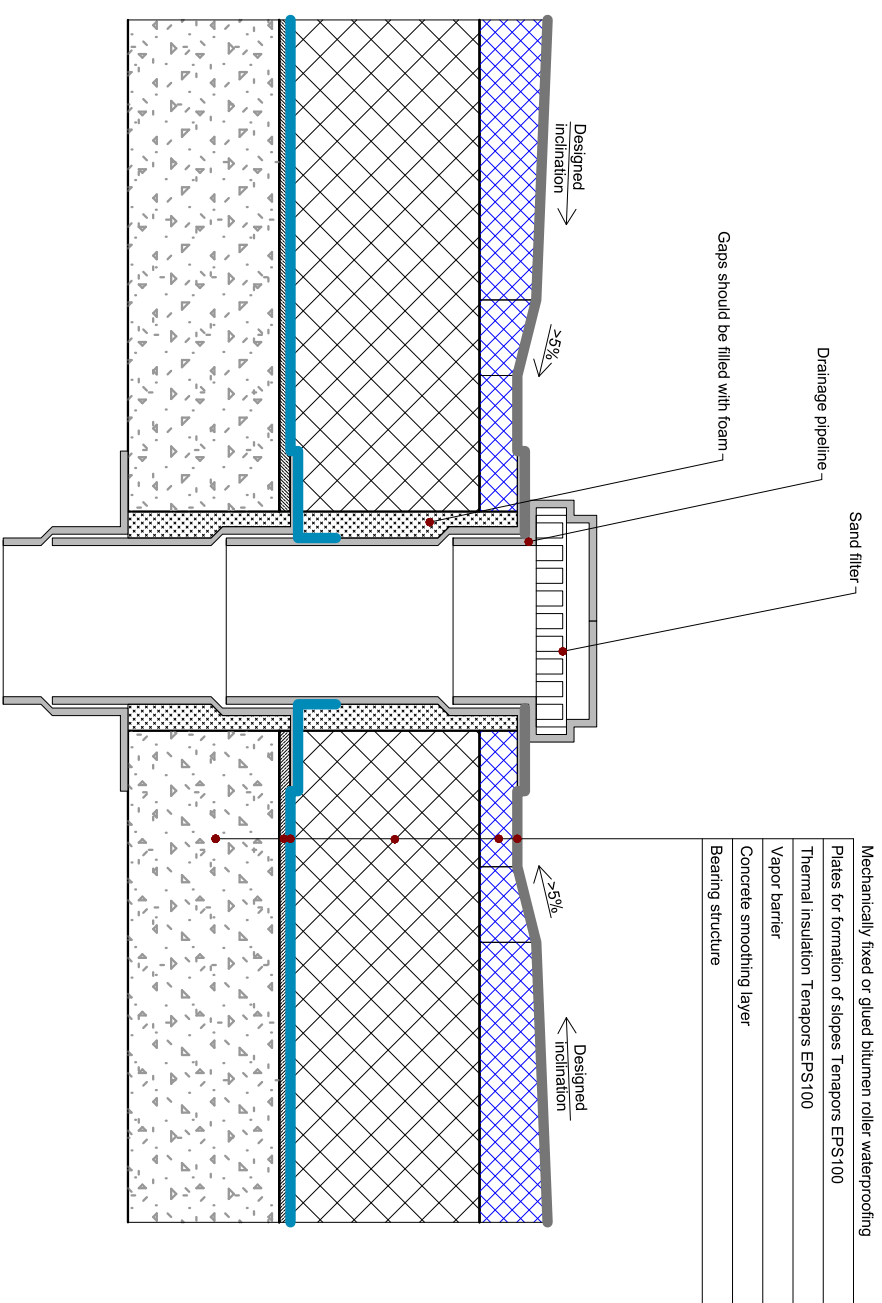


Table No. 1. Tenapors used materials

Nr.	Tenapors material	Picture
1.	Tenapors EPS 70/100	
2.	Plates for formation of slopes TENAPORS EPS100	

NOTES:

- * Characteristics such as thickness of the thermal insulation layer and bearing structure, and other are technical information is informative only - the actual values may vary depending on technical solution that has been chosen.
- ** Before choosing a solution, consult with a certified specialist regarding it's compliance with fire safety requirements and other legislation.

		SIA "TENAPORS"		Name	
Spodriņbas street 1, Dobeļe, LV-3701, Latvia Tel.: +37163707051 Faks: +37163724371		Flat roof drainage funnel assembly.		Type of Product	
Drawing number		LĶ-2018-9-7-ENG		Roof	
Scale		1:10		Date	
September 2018					

Flat roof - green roof assembly.

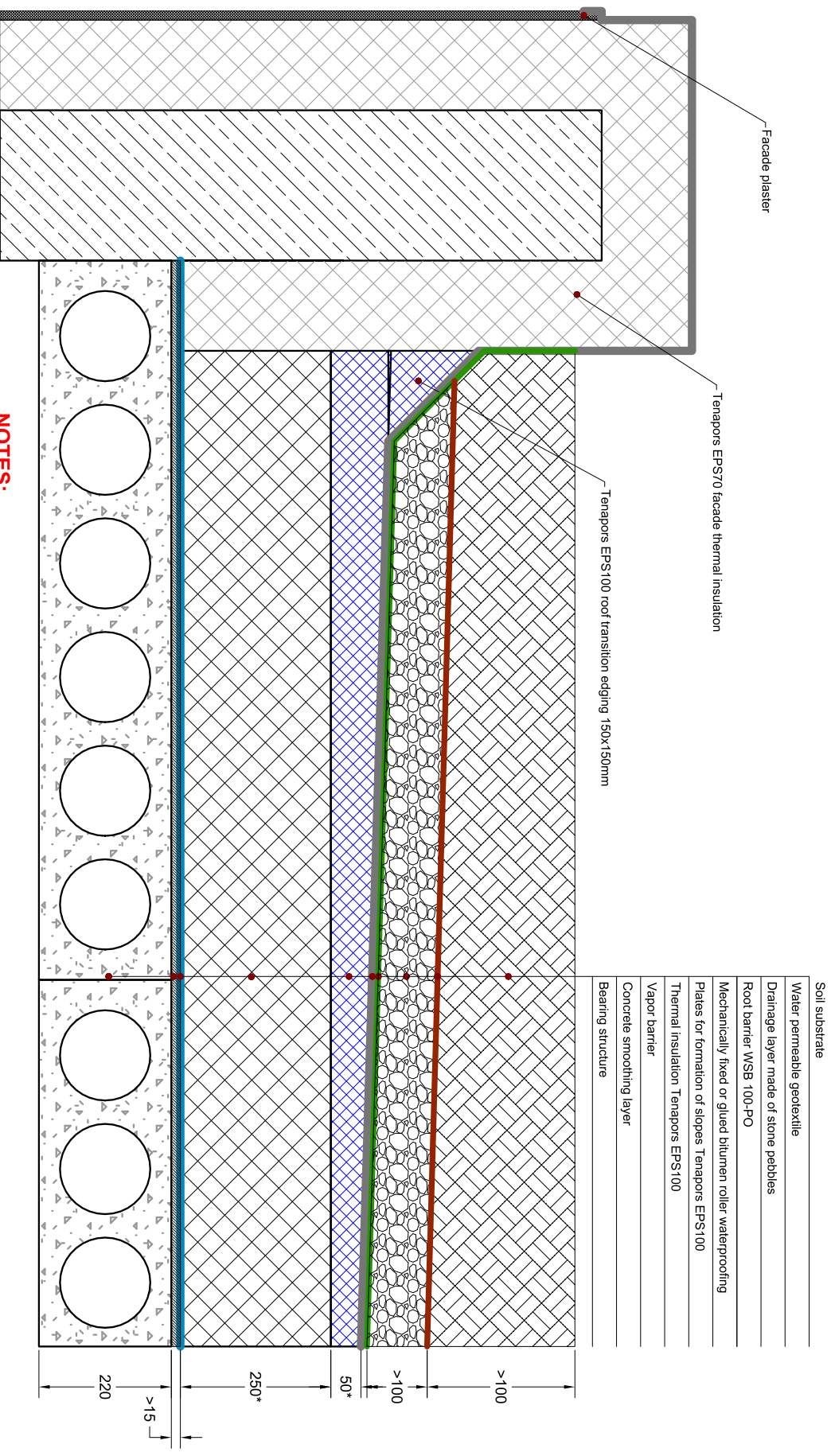


Table No. 1. Tenapors used materials

Nr.	Tenapors material	Picture
1.	Tenapors EPS 70/100	
2.	Plates for formation of slopes TENAPORS EPS100	

NOTES:

* Characteristics such as thickness of the thermal insulation layer and bearing structure, and otherare technical informaion is informative only - the actual values may vary depending on technical solution that has been chosen.

** Before choosing a solution, consult with a certified specialist regarding it's compliance with fire safety requirements and other legislation.



SIA "TENAPORS"

Spodnibas street 1, Dobeles, LV-3701, Latvia

Tel.: +37163707051 Faks: +37163724371

Drawing number

LJ-2018-9-8-ENG

Name

Flat roof - green roof assembly.

Type of Product

Roof

Scale

1:10

Date

September
2018